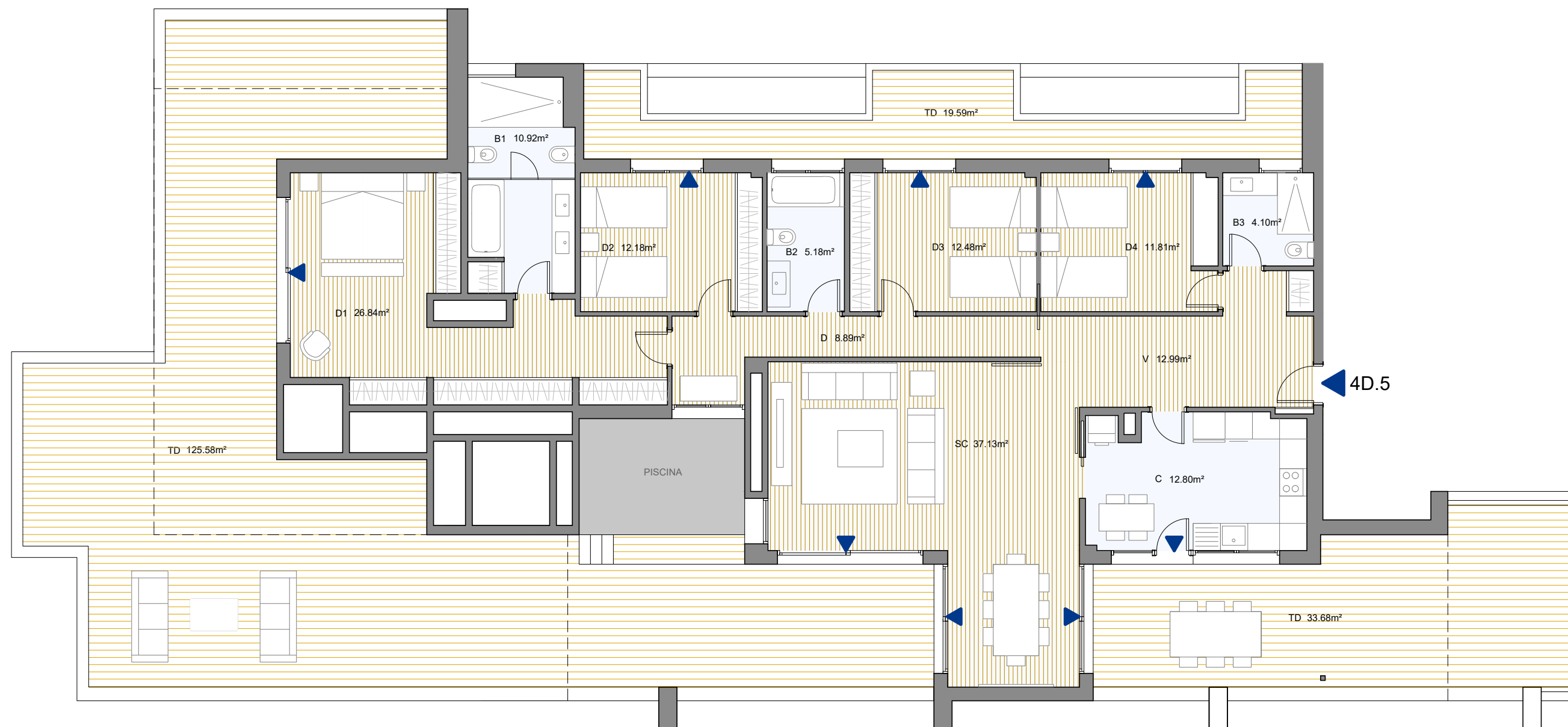
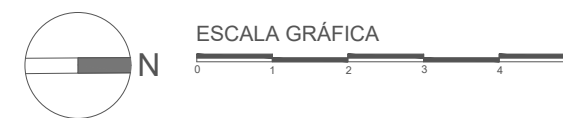
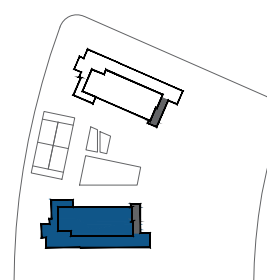
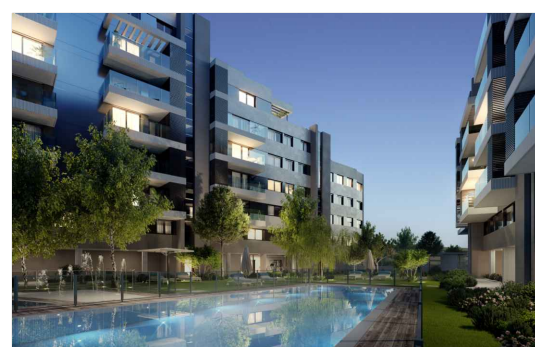
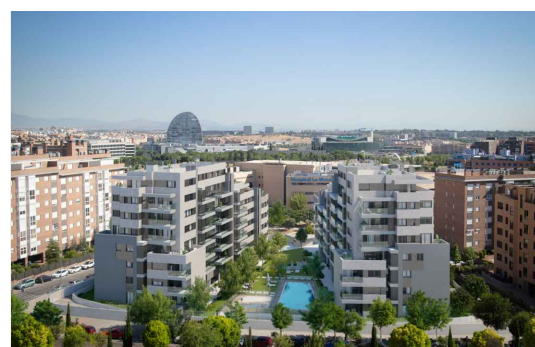


AVENIDA ISABEL DE VALOIS. 22  
 VIVIENDA: 4D.5  
 Portal 2 - Planta Ático - Puerta A

Residencial  
**INBISA** Sanchinarro  
 Valois



\*Todas las superficies incluidas en el plano son útiles



Superficie útil interior:	156.89 m <sup>2</sup>
Terraza / Jardín (Sup. construida):	201.81 m <sup>2</sup>
Superficie construida con comunes: (total interior + p.p. elementos comunes)	231.15 m <sup>2</sup>

Promueve:



Proyecto:

**ESTUDIO LAMELA**  
 ARQUITECTOS